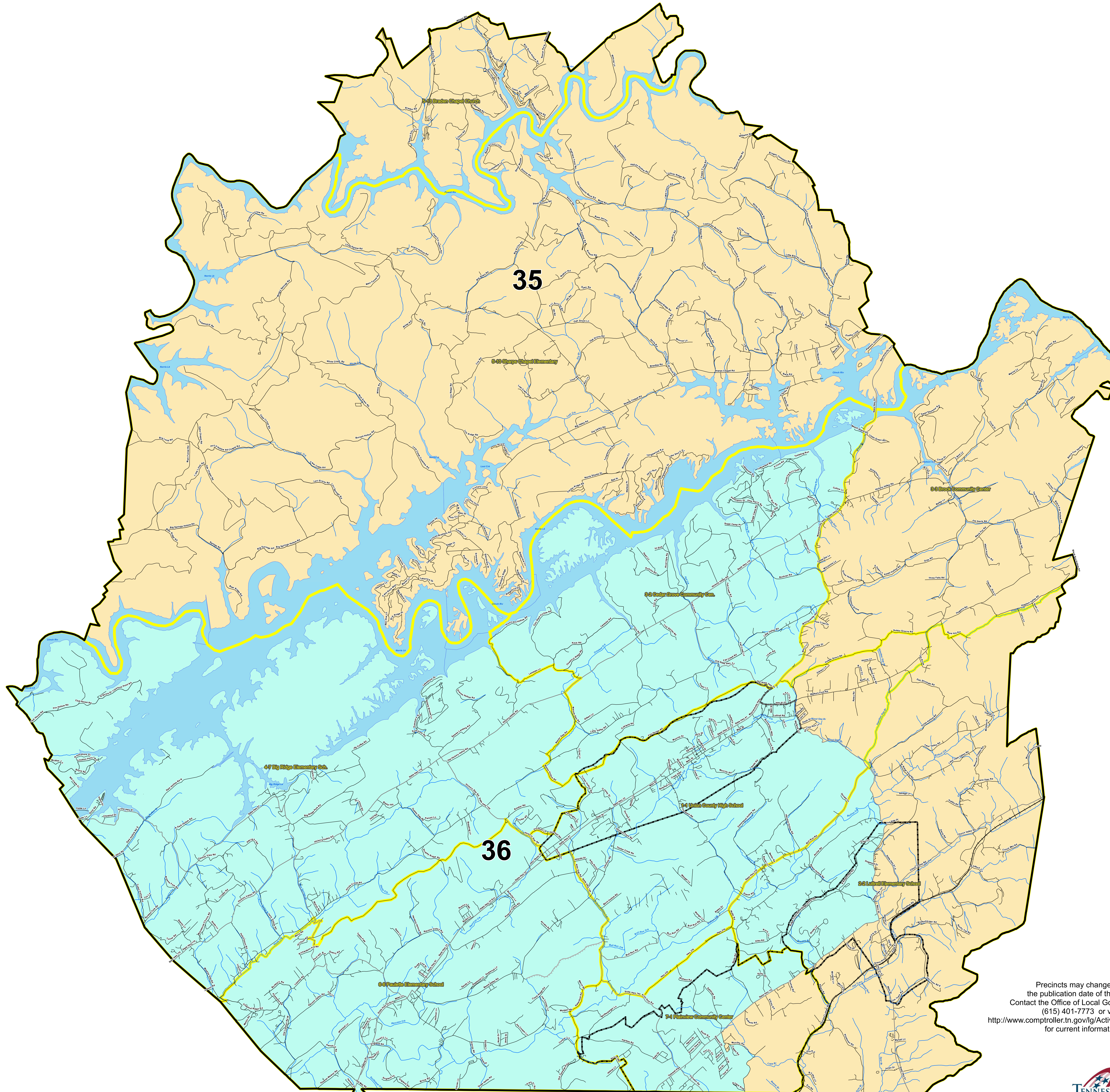


Union County 2012 House Districts and Current Voting Precincts



- Interstates
 - U.S. Highway
 - State Highway
 - Local Roads
 - Railroads
 - Creeks / Stream
 - Powerline
 - Ridgeline
 - ▭ City, Town
 - ▭ Voting Precinct
 - ▭ Lakes / Rivers
- HOUSE DISTRICTS**
- ▭ 35
 - ▭ 36
- 1** County Commission District Number
- 1234** Precinct ID Number

2010 Total Population 19,109

2010 Population by Precinct

NAME	TOTALPOP	TOTALPOP10	CCD
1-1 Union County High School	3514	2513	
2-2 Luttrell Elementary School	2484	1648	2
3-2 Cedar Grove Community Cen.	1224	887	3
3-3 Brook Community Center	1289	974	3
4-7 Big Ridge Elementary Sch.	2287	1548	4
5-10 Shacks Chapel Elementary	1980	1592	5
5-13 Braden Chapel Church	263	198	6
6-6 Prudden Elementary School	3229	2572	6
7-1 Plainview Community Center	2349	1712	7



Precincts may change after the publication date of this map. Contact the Office of Local Government at (615) 401-7773 or visit <http://www.comptroller.tn.gov/ActiveMapCounties.asp> for current information

STATE OF TENNESSEE COMPTROLLER OF THE TREASURY OFFICE OF LOCAL GOVERNMENT

James K. Polk State Office Building
505 Deaderick Street, Suite 1700
Nashville, Tennessee 37243-1402
Phone: (615) 401-7773
Fax: (615) 532-5279

